



Always “Test Patch” each type of surface/coating to be removed before general use to determine compatibility, yield, proper thickness and dwell time needed. It is best to perform a “Test Patch” on any areas to be stripped to ensure that you have the optimal product for your specific project.

### **Test Patch Instructions**

1. Apply multiple products (i.e. **Smart Strip**, **Smart Strip Pro**, **Peel Away 1**, **Peel Away 7**, **Etc.**) to the substrate using either a brush, rubber float or trowel in a 8-12” test area. **Apply at the appropriate specified label thickness.**



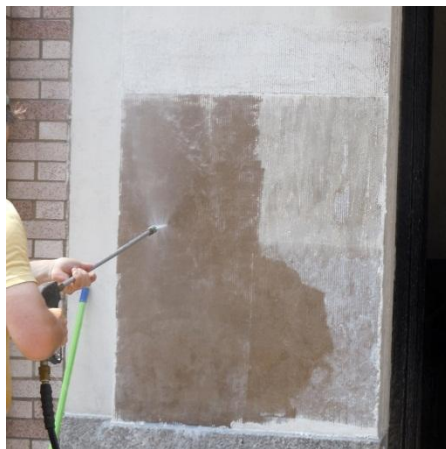
2. If product or work environment requires it, apply a pre-cut piece of 12” x 12” Peel Away Paper and lightly smooth over the “Test Patch” area, printed side out. Tape down all edges to substrate to protect from high traffic or possibility of rain or wind.



3. **Allow minimum of 12-24 hours dwell time before checking.** The colder the temperature, the longer the dwell time, in some cases depending on the number of coats to be removed (15+) and the coating itself, more than one application may be required.



4. After appropriate dwell times, using a plastic putty knife, gently scrape under the remover and Peel Away Paper starting at a corner and carefully lifting the putty knife, paper, remover and paint toward the paper in one continuous motion. Once the area has been removed, immediately scrub (using a medium bristled nylon scrub brush and water or high pressure hose or pressure washer). Surface should now be clean and free of paint film.



**Important:** When using Peel Away 1, surface neutralization is necessary following paint removal process. Follow the directions of the supplied Citri-Lize neutralizer for proper neutralizing of the test surface.